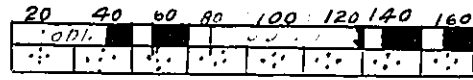
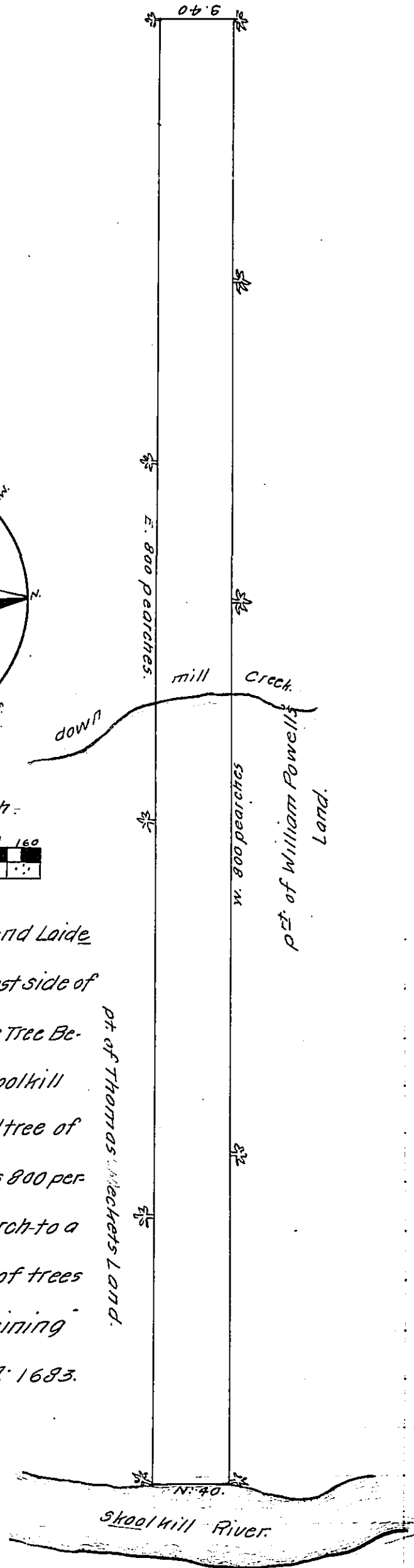


A
Scale of 160 perches.



By order from ye Survey Gen^l. I have this Day layd and Laide out for Barnibus Wilcox a Tract of Land Lying on ye West side of Delawer River on Skoolkill, Begining at a marked Pine Tree Being a bounded tree of Thomas Dacketts fronting Skoolkill north 40 perch to a marked Black oke Being Bounded tree of William Powell then W. By a marked line of trees 800 perches to a marked small Black oke then S. 40 perch to a small white oke then E. a Long a marked Line of trees 800 perch to the first marked pine tree, containing 200 Acres of Land Surabled ~~this~~ this 3rd 11th 1683.

of me (ob) shore B.



IN TESTIMONY that the above is a copy of the original remaining on file in the Department of Internal Affairs of Pennsylvania, made conformably to an Act of Assembly approved the 16th day of February, 1833, I have hereunto set my Hand and caused the Seal of said Department to be affixed at Harrisburg, this twenty fourth day of January, 1910.

Henry Horvath
Secretary of Internal Affairs.